

28-61 Shower Trays

MX is the UK's leading manufacturer of shower trays and has been established for more than 40 years. Situated in Gloucestershire our factories are fully ISO 9001:2008 approved. Using the latest design and production techniques, incorporating the most advanced materials, MX offers the largest range of Shower Tray shapes and sizes to the very highest quality.

So confident are we of the quality of our shower trays that we give a 25 year manufacturer's guarantee. All products conform to British and Unified and European Standards and are all made in England.

All products are manufactured in the UK and made with WRAS Approved Phthalate free Materials.

For further information on our extensive product range visit: www.mx-group.com

Low Profile 40-45mm

Elements

Elements Corner Waste

Expressions Hidden Waste

Duco - DucoLite

DucoStone

Ultra Low Profile 25mm

Gravity

Earth

Optimum

Classic High Wall 80-100mm

Classic

Shower Tray Accessories

Panel Riser Kit

Easy Plumb Kits

Wastes, Accessories etc



*We give a 25 year
manufacturer's
guarantee*



All materials used to make MX Shower Trays are 100% recyclable



MX Shower Trays

Low Profile **40** **45**
MM MM

ELEMENTS

Available in flat top and upstand options the Elements tray lends itself to the latest bathroom trends and achieves all the benefits of a solid cast stone shower tray. With the introduction of corner waste trays to the range, Elements is the ideal choice for the busy installer.



EXPRESSIONS **HIDDEN WASTE**

Expressions shower trays are designed to have a discreet waste system that allows a maximum showering area along with its stylish and functional looks.

DUCO

A unique Standard Tray you can Shape! Duco is a Low Profile tray, available in DucoLite and DucoStone options

Duco a shower tray that can be cut to fit any space and shape.

Duco is made from the most up to date materials. Being so adaptable, very strong but light weight. Allows you to install this tray virtually anywhere.

Duco is available in two options: DucoLite which is 75% lighter than a classic tray allowing it to be installed and carried by just one person but still giving you great strength.

DucoStone created using a polymer stone resin construction but still light enough to be carried and installed by one person.



Ultra Low Profile **25**
MM

GRAVITY

The Gravity Ultra Low Profile Range of Shower Trays has been designed to compliment the latest bathroom trends. Having a Stone Resin Construction this Range of Trays ensures that solid, dependable installation.



EARTH

This premium product has a granite effect finish to match any bathroom style or appearance; it is handmade for that true quality look. Available in three Granite finishes: Frost, Tan and Black.

OPTIMUM

The slimmest Shower Tray on the market at only 25mm high, they encompass all the benefits of a Wetroom without the cost. Level access installation can be achieved to accommodate less abled installations. The specially designed top access waste allows easy maintenance



Classic High Wall **80** **90** **100**
MM MM MM

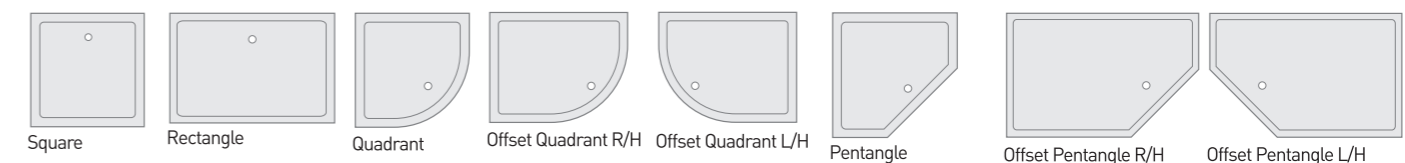
CLASSIC

These are the traditional high wall shower trays, which create that solid and dependable installation. With their durable and practical features the Classic range of shower trays gives a firm foundation to your showering area and are available in a variety of RAL colours upon request.

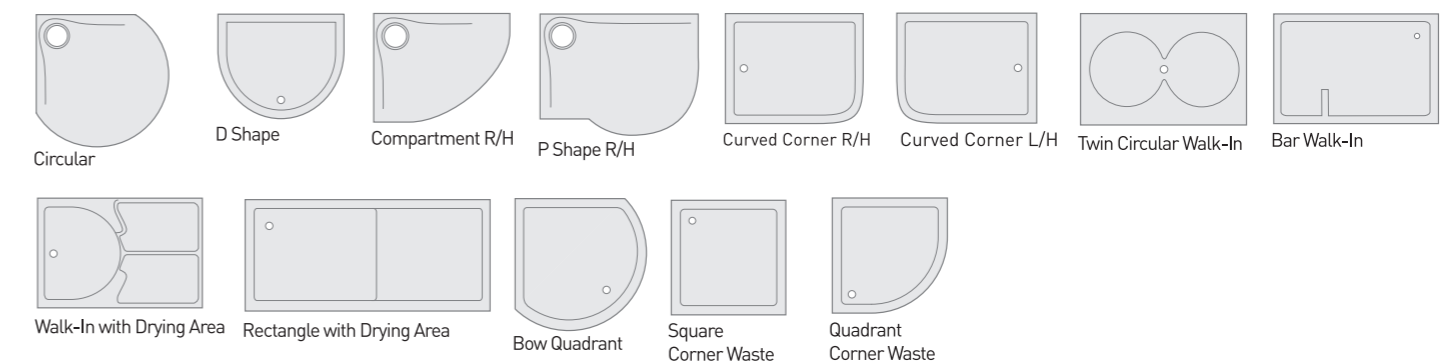


Shapes and Sizes Available

Standard Shower Trays



Special Shower Trays



Shower Tray Features

Icons



Heights



All sizes are nominal

Elements Shower Trays

The low profile cast stone tray is 40% lighter than a Classic Tray

Low Profile

40
MM

Elements Shower Trays

The Elements range of low profile shower trays are available in both flat top and tiling upstand options.

At only 40mm high this tray lends itself to the latest bathroom trends and includes all the benefits of a solid cast stone shower tray.

These shower trays suit any installation and if a raised installation is required the contoured underside leg location makes it quick and easy to install using the MX Easy Plumb Kits.

ABS
ACRYLIC
CAPPED

FLAT TOP

UPSTAND

40%
LIGHTER

Features

- 40% lighter than a high wall stone resin shower tray
- A simple stylish shower tray which combines high quality looks with functionality
- The sleek low profile design is available in many special shapes and sizes
- Suitable for most types of enclosure
- Designed for 90mm Hi-Flow waste
- Made with WRAS approved Phthalate free materials

Quadrant - Cast Upstand



Corner Waste Shower Trays



Quadrant - Flat top



Square - Flat top

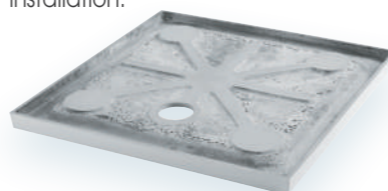


Elements Square Flat Top Shower Tray shown with Wetroom Panels

Elements Shower Trays Range

Shape	Size mm	ABS	
		Flat Top	Upstand
Square	700 x 700	XHA	
Square	760 x 760	SAY	SAR
Square	800 x 800	SBU	SBN
Square	900 x 900	SCO	SCH
Square	1000 x 1000	SCU	
Square	1100 x 1100	X71	
Square	1200 x 1200	X72	
Rectangle	800 x 700	SMA	
Rectangle	800 x 760	SMB	
Rectangle	900 x 700	XHB	
Rectangle	900 x 760	SNM	SNN
Rectangle	900 x 800	SNY	
Rectangle	1000 x 700	XHC	
Rectangle	1000 x 760	TOB	SOB
Rectangle	1000 x 800	SOY	SOZ
Rectangle	1000 x 900	XHD	
Rectangle	1100 x 700	XHE	
Rectangle	1100 x 760	XHF	
Rectangle	1100 x 800	SPS	
Rectangle	1100 x 900	XHG	
Rectangle	1200 x 700	XHH	
Rectangle	1200 x 760	SQY	SQR
Rectangle	1200 x 800	SRO	SRF
Rectangle	1200 x 900	SRY	SRX
Rectangle	1300 x 700	SS2	
Rectangle	1300 x 760	SS3	
Rectangle	1300 x 800	SS4	
Rectangle	1300 x 900	SS5	
Rectangle	1400 x 700	XHI	
Rectangle	1400 x 760	XHJ	
Rectangle	1400 x 800	XHK	SS6
Rectangle	1400 x 800 3 Upstands		SS7
Rectangle	1400 x 800 2 Upstands L/H		SS8
Rectangle	1400 x 800 2 Upstands R/H		SS9
Rectangle	1400 x 900	SSO	SSP
Rectangle	1500 x 700	XHL	
Rectangle	1500 x 760	XHM	
Rectangle	1500 x 800	XHN	STJ
Rectangle	1500 x 800 3 Upstands		STK
Rectangle	1500 x 800 2 Upstands L/H		STL
Rectangle	1500 x 800 2 Upstands R/H		STM
Rectangle	1500 x 900	XHO	
Rectangle	1600 x 700	ST1	
Rectangle	1600 x 760	STG	
Rectangle	1600 x 800	STF	STN
Rectangle	1600 x 800 3 Upstands		STO
Rectangle	1600 x 800 2 Upstands L/H		STP
Rectangle	1600 x 800 2 Upstands R/H		STQ
Rectangle	1600 x 900	STI	
Rectangle	1650 x 700	X81	
Rectangle	1650 x 800	X82	
Rectangle	1700 x 700	ST3	
Rectangle	1700 x 700 Bath Replacement	ST2	
Rectangle	1700 x 750	STC	STD
Rectangle	1700 x 800	XHP	
Rectangle	1700 x 900	XHQ	
Rectangle	1800 x 700	XHR	
Rectangle	1800 x 760	XHS	
Rectangle	1800 x 800	XHT	
Rectangle	1800 x 900	XHU	
Rectangle	2000 x 700	XHX	
Rectangle	2000 x 800	XHV	
Rectangle	2000 x 900	XHW	

Contoured underside of the shower tray clearly identifying leg location when installed as a raised installation.



Panel Riser Kit



Easy Plumb Kit

For Elements shower trays it is recommended that you use one of our Easy Plumb kits for installing as a raised installation.



Elements Shower Trays Range

Shape	Size mm	ABS	
		Flat Top	Upstand
Quadrant	800 x 800 (550R)	TAU	TAP
Quadrant	900 x 900 (550R)	TBO	TBD
Quadrant	1000 x 1000 (550R)	TBW	
Offset Quadrant	900 x 760 L/H (550R)	TN1	
Offset Quadrant	900 x 760 R/H (550R)	TN2	
Offset Quadrant	900 x 800 L/H (550R)	TNY	
Offset Quadrant	900 x 800 R/H (550R)	TNU	
Offset Quadrant	1000 x 700 L/H (550R)	TU1	
Offset Quadrant	1000 x 700 R/H (550R)	TU2	
Offset Quadrant	1000 x 760 L/H (550R)	TO1	
Offset Quadrant	1000 x 760 R/H (550R)	TO2	
Offset Quadrant	1000 x 800 L/H (550R)	TOS	
Offset Quadrant	1000 x 800 R/H (550R)	TOO	
Offset Quadrant	1000 x 900 L/H (550R)	TOP	
Offset Quadrant	1000 x 900 R/H (550R)	TOR	
Offset Quadrant	1100 x 700 L/H (550R)	TU3	
Offset Quadrant	1100 x 700 R/H (550R)	TU4	
Offset Quadrant	1100 x 760 L/H (550R)	TU5	
Offset Quadrant	1100 x 760 R/H (550R)	TU6	
Offset Quadrant	1100 x 800 L/H (550R)	TQW	
Offset Quadrant	1100 x 800 R/H (550R)	TQX	
Offset Quadrant	1100 x 900 L/H (550R)	TQY	
Offset Quadrant	1100 x 900 R/H (550R)	TQZ	
Offset Quadrant	1200 x 700 L/H (550R)	TU7	
Offset Quadrant	1200 x 700 R/H (550R)	TU8	
Offset Quadrant	1200 x 760 L/H (550R)	TOT	
Offset Quadrant	1200 x 760 R/H (550R)	TOV	
Offset Quadrant	1200 x 800 L/H (550R)	TPM	
Offset Quadrant	1200 x 800 R/H (550R)	TPI	
Offset Quadrant	1200 x 900 L/H (550R)	TQK	
Offset Quadrant	1200 x 900 R/H (550R)	TQG	
Offset Quadrant	1300 x 760 L/H (550R)	X73	
Offset Quadrant	1300 x 760 R/H (550R)	X74	
Offset Quadrant	1300 x 800 L/H (550R)	X75	
Offset Quadrant	1300 x 800 R/H (550R)	X76	
Offset Quadrant	1400 x 760 L/H (550R)	X77	
Offset Quadrant	1400 x 760 R/H (550R)	X78	
Offset Quadrant	1400 x 800 L/H (550R)	X79	
Offset Quadrant	1400 x 800 R/H (550R)	X80	
Pentangle	900 x 900	UAN	
Specials	800 x 800 Bow Quad (550R)	XXM	
Specials	900 x 900 Bow Quad (550R)	XXY	
Specials	900 x 900 Bow Quad	TBH	
Specials	1200 x 800 Offset Quad Curved Corner L/H (550R)	XGI	
Specials	1200 x 800 Offset Quad Curved Corner R/H (550R)	XGJ	
Specials	1400 x 900 Twin Curved Walk-In	XPS	
Specials	1400 x 900 Twin Circular Walk-In		XAH
Specials	1040 D Shape	TBX	

Elements Corner Waste Shower Trays Range

Shape	Size mm	ABS	
		Flat Top	Upstand
Square	760 x 760	TZA	
Square	800 x 800	TZB	
Square	900 x 900	TZC	
Quadrant	800 x 800 (550R)	TZD	
Quadrant	900 x 900 (550R)	TZE	

The Universal Easy Plumb Kit

Any Tray...



The Universal Easy Plumb Kit...



Complete raised installation...



Expressions Shower Trays

With Hidden Waste

Low Profile

45
MM

ABS
ACRYLIC
CAPPED

FLAT TOP

40%
LIGHTER

Expressions Shower Trays

A completely new outlook in shower tray design from MX

Expressions shower trays are designed with a discrete waste system to provide the maximum showering area in conjunction with stylish and functional looks.

The hidden waste design incorporates a standard waste outlet and allows easy access to clean, maintain and service without the need for an expensive gully waste system.

Features

- Acrylic capped ABS finish
- 40% lighter than a classic stone resin shower tray
- Quick and easy to install
- Hidden waste system allows easy access to clean, service and maintain without the cost of a gully waste system
- Contoured underside for ease of leg location when using an MX Easy Plumb Kit
- Made with WRAS approved Phthalate free materials

Square



R/H Offset Quadrant



HIDDEN WASTE

The design of the shower tray combined with the Waste System allows more than 28litrs per minute drainage.



The discrete waste cover is strong and flexible to ensure safety at all times



MX Expressions Shower Tray shown with a 8mm Single Sliding Door and Semi Frameless Side Panel

Expressions Shower Trays

Expressions Shower Trays

Available in a range of popular shapes and sizes the Expressions shower tray creates the minimalistic look with practical and stylish features.



Contoured underside of the shower tray clearly identifying leg location when installed as a raised installation.

The MX Expressions Hidden Waste System

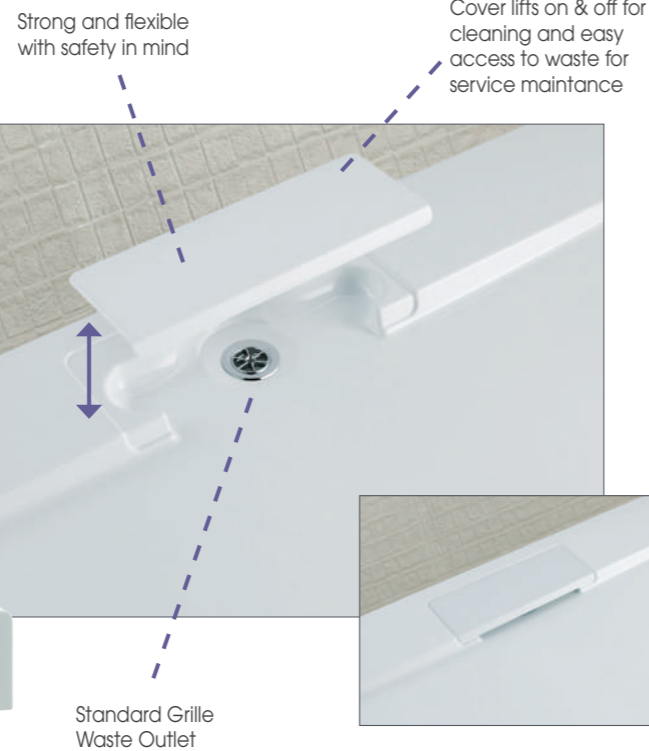
Stylish & practical

The design of the shower tray combined with the Expressions Waste System allows 28 litres per minute drainage.

- Built in ledge for shampoo etc.
- Discreet waste design for maximum showering area
- Easy to access and maintain waste system
- Incorporates a standard waste



HIDDEN WASTE



Expressions Shower Trays Range

Shape	Size mm	ABS
		Flat Top
Square	760 x 760	TYA
Square	800 x 800	TYB
Square	900 x 900	TYC
Rectangle	1000 x 800	TYH
Rectangle	1200 x 760	TYI
Rectangle	1200 x 800	TYJ
Rectangle	1200 x 900	TYK
Rectangle	1400 x 900	TYL
Rectangle	1600 x 800	TYM
Rectangle	1700 x 800	TYN
Quadrant	800 x 800 (550R)	TYS
Quadrant	900 x 900 (550R)	TYT
Offset Quadrant	1200 x 900 L/H (550R)	TYV
Offset Quadrant	1200 x 900 R/H (550R)	TYZ



Quadrant

Easy Plumb Kit

For Expressions shower trays you can use one of our Easy Plumb kits for fitting the shower tray as a raised installation.



MX Expressions Shower Tray shown with a 8mm Single Sliding Door and Semi Frameless Side Panel

Duco Shower Trays

The Standard Tray You Can Shape

Low Profile

45
MM

Up to 75% Lighter than Classic trays yet virtually unbreakable

Duco at only 45mm high uses the most up to date materials. This tray can be easily cut to accommodate most installations making it rapidly adaptable to modern bathroom shapes.

ABS
ACRYLIC
CAPPED

FLAT TOP

UPSTAND

Up to 75% Lighter than Classic trays yet virtually unbreakable. This tray can be easily cut to accommodate most installations.

DucoLite

DucoLite is only 45mm high and available in flat top and upstand options and complies to HSE recommendations. DucoLite can be carried and installed by one person but has all the benefits of a strong solid construction making DucoLite the perfect choice for any installation.

Features

- 75% Lighter than a Classic tray yet virtually unbreakable
- Available in flat top and upstand options
- Can be installed carried and installed by one person
- Complies with BS EN 14527: 2006+A1: 2010
- Made with WRAS approved Phthalate free materials

75%
LIGHTER

DucoStone

DucoStone is a polymer stone resin tray, available in flat top and upstand options it creates the minimalistic look with a stone effect finish. DucoStone is lighter than traditional stone resin shower trays and is light enough to be carried and installed by one person and also includes mineral torsion beams for extra rigidity.

Features

- 60% Lighter than traditional stone resin shower trays
- Available in flat top and upstand options
- Encompasses mineral torsion beams for rigidity
- Can be installed by one person
- Complies with BS EN 14527: 2006+A1: 2010
- Made with WRAS approved Phthalate free materials

60%
LIGHTER



Quadrant



Rectangle



DucoStone Offset Quadrant Shower Tray shown with a two door Quad enclosure

Duco Shower Trays

How to Shape a Duco Shower Tray

Duco shower trays can be easily cut to a shape which means a Duco tray can be installed in a location that couldn't be done before. Duco trays are available in two options DucoLite and DucoStone both of which can be shaped. Below shows how simple it is to cut and shape a Duco tray.



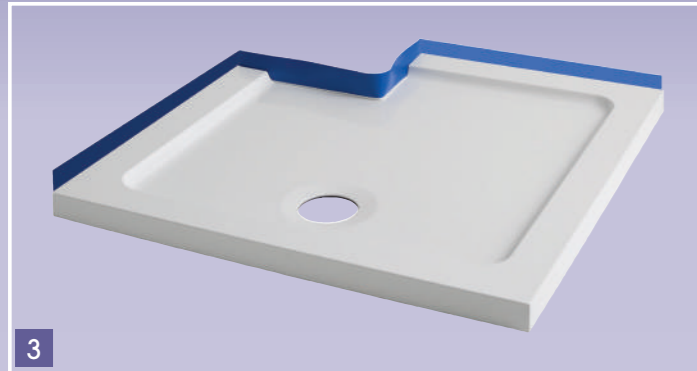
1

A standard Duco tray can be used as purchased



2

A standard Duco tray can be cut to fit around obstructions (for example boxing)



3

You can apply optional Flexi Seal to the Duco tray where it is being fitted against a wall



4

An Installed Duco tray

Easy Plumb Kit with Wood

For a raised installation once the tray has been cut, ensure you use the MX easy plumb kit. This creates full support across the base of the tray to allow a strong solid foundation.

Any Duco Tray...

Easy Plumb Kit with Wood ...

Complete Raised Installation



Duco Shower Trays Range

DucoStone

Shape	Size mm	ABS	ABS
		Flat Top	Upstand
Square	700 x 700	XP1	
Square	760 x 760	XFA	XF3
Square	800 x 800	XFB	XF4
Square	900 x 900	XFC	XF5
Square	1000 x 1000	XFO	
Rectangle	900 x 760	XFP	XF6
Rectangle	900 x 800	XFQ	
Rectangle	1000 x 700	XUA	
Rectangle	1000 x 760	XFR	XF7
Rectangle	1000 x 800	XFD	XF8
Rectangle	1000 x 900	XPT	
Rectangle	1100 x 700	XUB	
Rectangle	1100 x 760	XPU	
Rectangle	1100 x 800	XFS	
Rectangle	1100 x 900	XP2	
Rectangle	1200 x 700	XUC	
Rectangle	1200 x 760	XFE	XF9
Rectangle	1200 x 800	XFF	XGA
Rectangle	1200 x 900	XFG	
Rectangle	1400 x 700	XUD	
Rectangle	1400 x 760	XUE	
Rectangle	1400 x 800	XUF	
Rectangle	1400 x 900	XFH	XGB
Rectangle	1400 x 900 With Drying Area	XGK	
Rectangle	1500 x 700	XUG	
Rectangle	1500 x 760	XPV	
Rectangle	1500 x 800	XUI	
Rectangle	1500 x 900	XPW	
Rectangle	1600 x 700	XWX	
Rectangle	1600 x 800	XFT	
Rectangle	1600 x 800 With Drying Area	XGL	
Rectangle	1700 x 700 Bath Replacement	XFU	
Rectangle	1700 x 750	XFV	
Rectangle	1700 x 800	XPX	
Rectangle	1700 x 800 With Drying Area	XGV	
Rectangle	1700 x 900	XUL	
Quadrant	800 x 800 (550R)	XFM	XGD
Quadrant	900 x 900 (550R)	XFN	XGE
Quadrant	1000 x 1000 (550R)	XFW	
Offset Quadrant	900 x 760 L/H (550R)	XPY	
Offset Quadrant	900 x 760 R/H (550R)	XPZ	
Offset Quadrant	900 x 800 L/H (550R)	XFX	
Offset Quadrant	900 x 800 R/H (550R)	XFY	
Offset Quadrant	1000 x 800 L/H (550R)	XFI	
Offset Quadrant	1000 x 800 R/H (550R)	XFJ	
Offset Quadrant	1200 x 800 L/H (550R)	XFZ	
Offset Quadrant	1200 x 800 R/H (550R)	XF1	
Offset Quadrant	1200 x 900 L/H (550R)	XFK	
Offset Quadrant	1200 x 900 R/H (550R)	XFL	
Pentangle	900 x 900	XF2	

DucoLite

Shape	Size mm	ABS	ABS
		Flat Top	Upstand
Square	760 x 760	XNA	XPA
Square	800 x 800	XNB	XPB
Square	900 x 900	XNC	XPC
Square	1000 x 1000	XND	
Rectangle	900 x 760	XNE	XPD
Rectangle	900 x 800	XNF	
Rectangle	1000 x 760	XNZ	XPE
Rectangle	1000 x 800	XNG	XPF
Rectangle	1100 x 800	XNH	
Rectangle	1200 x 760	XNI	XPG
Rectangle	1200 x 800	XNJ	XPH
Rectangle	1200 x 900	XNK	
Rectangle	1400 x 900	XNL	XPI
Rectangle	1600 x 800	XNY	
Rectangle	1700 x 700 Bath Replacement	XPR	
Rectangle	1700 x 750	XNM	XPJ
Quadrant	800 x 800 (550R)	XNN	XPK
Quadrant	900 x 900 (550R)	XNO	XPL
Quadrant	1000 x 1000 (550R)	XNP	
Offset Quadrant	900 x 800 L/H (550R)	XNR	
Offset Quadrant	900 x 800 R/H (550R)	XNQ	
Offset Quadrant	1000 x 800 L/H (550R)	XNT	
Offset Quadrant	1000 x 800 R/H (550R)	XNS	
Offset Quadrant	1200 x 800 L/H (550R)	XNV	
Offset Quadrant	1200 x 800 R/H (550R)	XNU	
Offset Quadrant	1200 x 900 L/H (550R)	XNX	
Offset Quadrant	1200 x 900 R/H (550R)	XNW	
Pentangle	900 x 900	XPM	



Offset Quadrant - Left hand



Bath Replacement

Gravity Stone Resin Shower Trays

For the complete Wetroom experience

Ultra Low Profile

25
MM

Gravity Shower Trays

The Ultra Low Profile Range of Shower Trays, designed to compliment the latest bathroom trends.

The Gravity Ultra Low Profile Range of Shower Trays are solid, dependable and easy to install.

Available in a wide range of popular shapes and sizes the Gravity shower tray creates that minimalistic Wetroom look without all those extra costs. It transforms any bathroom into a modern and tranquil space.

ABS
ACRYLIC
CAPPED

FLAT TOP

Features

- Acrylic capped ABS finish
- The luxury of a Wetroom without the cost
- Quick and easy to install
- Unique top access waste enabling quick and easy access for installation, service and maintenance
- Tested to conform with BS EN 14527: 2006+A1: 2010
- Amazingly strong due to its integral body frame construction and reinforced waste design
- Suitable for less-abled installations
- Made with WRAS approved Phthalate free materials

Square



Quadrant



Gravity Rectangle Shower Tray shown with a 8mm Single Sliding door and side panel

Gravity Stone Resin Shower Trays

Gravity Stone Resin Shower Trays Range

Shape	Size mm	ABS Flat Top
Square	760 x 760	URA
Square	800 x 800	URB
Square	900 x 900	URC
Square	1000 x 1000	URD
Rectangle	1200 x 800 L/H	URE
Rectangle	1200 x 800 R/H	URF
Rectangle	1200 x 900 L/H	URG
Rectangle	1200 x 900 R/H	URH
Rectangle	1400 x 900 L/H	URI
Rectangle	1400 x 900 R/H	URJ
Quadrant	800 x 800 (550R)	URK
Quadrant	900 x 900 (550R)	URL
Quadrant	1000 x 1000 (550R)	URM
Offset Quadrant	1200 x 760 L/H (550R)	URN
Offset Quadrant	1200 x 760 R/H (550R)	URO
Offset Quadrant	1200 x 800 L/H (550R)	URP
Offset Quadrant	1200 x 800 R/H (550R)	URQ
Offset Quadrant	1200 x 900 L/H (550R)	URR
Offset Quadrant	1200 x 900 R/H (550R)	URS

Easy Plumb Kit

For Gravity shower trays you can use one of our Easy Plumb kits for fitting the shower tray as a raised installation.



Top Access Waste System Stylish & practical

- Unique top access waste enabling quick and easy access for installation, service and maintenance.
- The design of the shower tray combined with the Hi-Flow Waste allows more than 32 litres per minute drainage.



Gravity Rectangle Shower Tray shown with a 8mm Single Sliding door and side panel

Earth Shower Trays

Granite effect finish to deliver that exclusive look and feel

Ultra Low Profile

25
MM

GEL
COAT

FLAT TOP

Earth Shower Trays

A signature product range in a variety of granite effect finishes

The Earth shower tray range comes in a variety of granite effect finishes to compliment any bathroom style and each one is handmade for that true quality appearance.

At only 25mm high the affordable luxury of the Earth shower tray range transforms any bathroom to the minimalist appearance of a Wetroom. With the look of a solid surface it meet today's high standards of customer expectations.

Features

- This premium product has a granite effect finish to compliment any bathroom style and is handmade for that true quality appearance.
- Gel Coat solid stone resin tray with a Granite effect finish that is cool to the touch
- The luxury of a Wetroom look without the cost
- Quick and easy to install
- Unique top access waste enabling quick and easy access for installation, service and maintenance
- Tested to conform with BS EN 14527: 2006+A1: 2010

Quadrant - Black Granite effect



Square - Tan Granite effect



Offset Quadrant - Frost Granite effect - Left hand



This premium handmade product has a granite effect finish to compliment any bathroom style and is handmade for that true quality appearance. Available in three granite effect finishes: Frost, Tan and Black.



Earth Shower Tray shown in frost finish with a 8mm Wetroom Single Panel

Earth Shower Trays

An Exclusive selection of popular shapes and sizes the Earth shower tray creates the minimalistic Wetroom look without all those extra costs transforming any bathroom into a modern and tranquil space.



Earth Shower Tray shown in frost finish with a 8mm Wetroom Single Panel

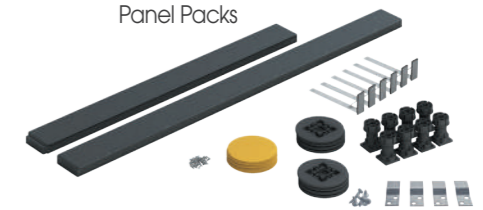
Earth Shower Trays Range

Shape	Size mm	GEL	
		Flat Top	
■	Square	900 x 900 'Frost' Granite Effect	UPA
	Square	900 x 900 'Tan' Granite Effect	UPB
	Square	900 x 900 'Black' Granite Effect	UPC
■	Rectangle	1200 x 800 L/H 'Frost' Granite Effect	UPE
	Rectangle	1200 x 800 L/H 'Tan' Granite Effect	UPG
	Rectangle	1200 x 800 L/H 'Black' Granite Effect	UPJ
	Rectangle	1200 x 800 R/H 'Frost' Granite Effect	UPF
	Rectangle	1200 x 800 R/H 'Tan' Granite Effect	UPH
	Rectangle	1200 x 800 R/H 'Black' Granite Effect	UPK
■	Quadrant	900 x 900 (550R) 'Frost' Granite Effect	UPL
	Quadrant	900 x 900 (550R) 'Tan' Granite Effect	UPM
	Quadrant	900 x 900 (550R) 'Black' Granite Effect	UPN
■	Offset Quadrant	1200 x 900 L/H (550R) 'Frost' Granite Effect	UPQ
	Offset Quadrant	1200 x 900 L/H (550R) 'Tan' Granite Effect	UPS
	Offset Quadrant	1200 x 900 L/H (550R) 'Black' Granite Effect	UPU
	Offset Quadrant	1200 x 900 R/H (550R) 'Frost' Granite Effect	UPR
	Offset Quadrant	1200 x 900 R/H (550R) 'Tan' Granite Effect	UPT
	Offset Quadrant	1200 x 900 R/H (550R) 'Black' Granite Effect	UPV

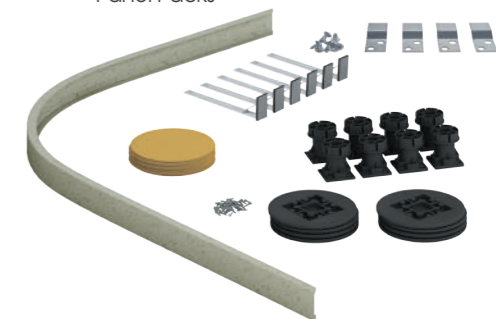
Earth Panel Packs

Earth shower trays in all three colour options can be easily converted to a raised installation. These panel packs are handmade and hand polished. Finished to the highest standards to match the tray's surface.

Square /Rectangle Panel Packs



Quad /Offset Quad Panel Packs



Earth Panel Packs

Panel Riser Kit for Square/Rectangle Trays 'Frost' Granite Effect	UQA
Panel Riser Kit for Square/Rectangle Trays 'Tan' Granite Effect	UQB
Panel Riser Kit for Square/Rectangle Trays 'Black' Granite Effect	UQC
Panel Riser Kit for Quadrant/Offset Quad Trays 'Frost' Granite Effect	UQE
Panel Riser Kit for Quadrant/Offset Quad Trays 'Tan' Granite Effect	UQF
Panel Riser Kit for Quadrant/Offset Quad Trays 'Black' Granite Effect	UQG

Top Access Waste System Stylish & practical

- Unique top access waste enabling quick and easy access for installation, service and maintenance.
- The design of the shower tray combined with the Hi-Flow Waste allows more than 32 litres per minute drainage.



Ultra Low Profile

Optimum Shower Trays

The complete Wetroom experience

25
MM

75%
LIGHTER

ABS
ACRYLIC
CAPPED

FLAT TOP

Optimum Shower Trays

An ultra low profile range of shower trays specifically designed using the latest materials, 75% lighter than stone trays

Developed by MX these shower trays are surprisingly light, amazingly strong and are the slimmest on the market at only 25mm high.

Available in a wide range of popular shapes and sizes the Optimum shower tray creates that minimalistic Wetroom look without all those extra costs, transforming any bathroom into a modern and tranquil space.

Features

- Acrylic capped ABS finish
- The luxury of a Wetroom without the cost
- Quick and easy to install
- Unique top access waste enabling quick and easy access for installation, service and maintenance
- Tested to conform with BS EN 14527: 2006+A1: 2010
- Amazingly strong due to its integral body frame construction
- Suitable for less-abled installations
- Made with WRAS approved Phthalate free materials

Circular



D Shape



Rectangle - Right hand

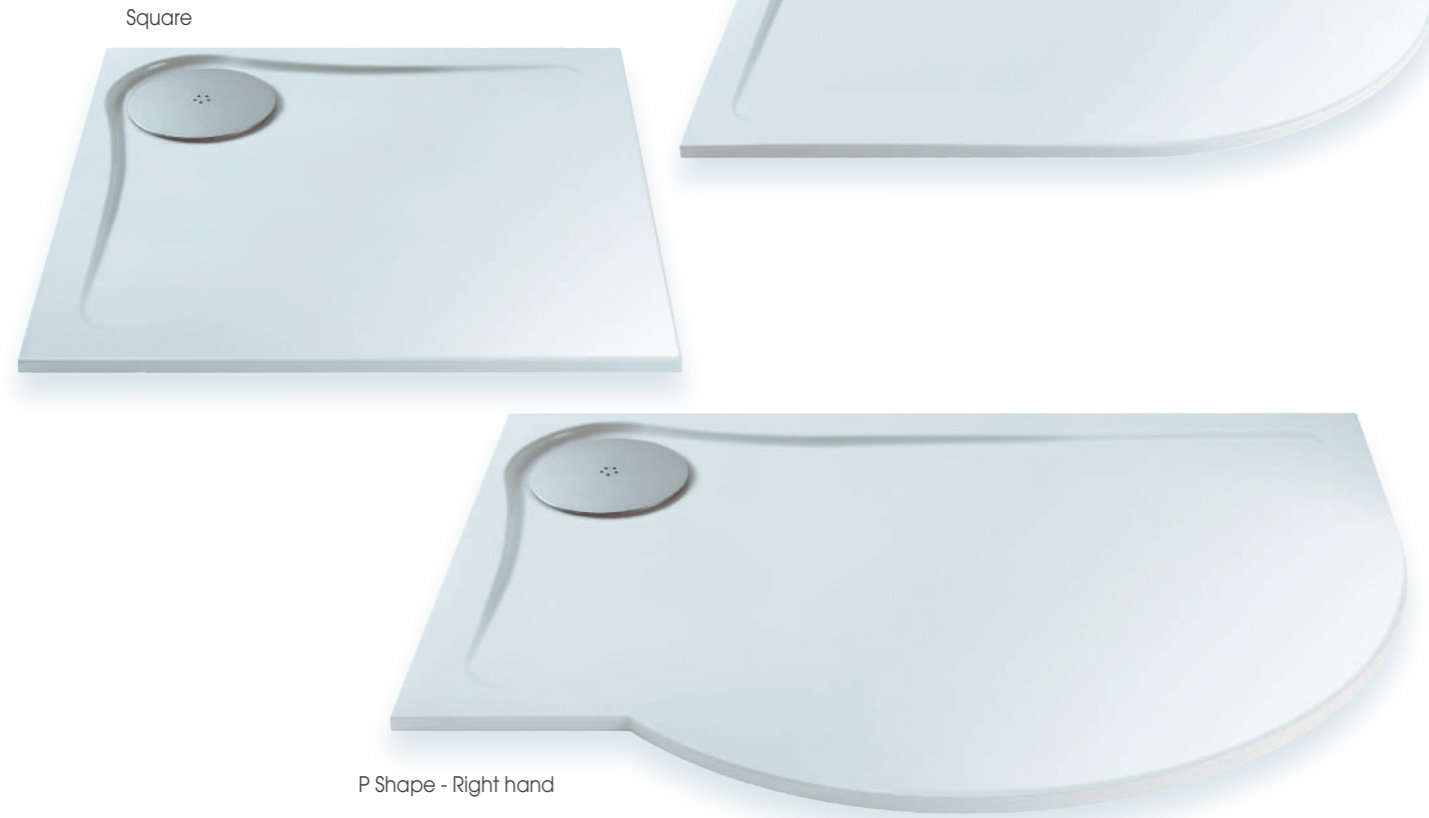


Optimum Rectangle Shower Tray shown with a 8mm Wetroom Single Panel

Optimum Shower Trays

Optimum Shower Trays

Available in a wide range of popular shapes and sizes the Optimum shower tray creates that minimalistic Wetroom look without all those extra costs transforming any bathroom into a modern and tranquil space.



Optimum Shower Trays Range

	Shape	Size mm	ABS Flat Top
■	Square	760 x 760	ULA
	Square	800 x 800	ULB
	Square	900 x 900	ULC
	Square	1000 x 1000	ULD
■	Rectangle	1200 x 800 L/H	ULE
	Rectangle	1200 x 800 R/H	ULF
	Rectangle	1200 x 900 L/H	ULG
	Rectangle	1200 x 900 R/H	ULH
	Rectangle	1400 x 900 L/H	ULJ
	Rectangle	1400 x 900 R/H	ULK
■	Quadrant	800 x 800 (550R)	ULL
	Quadrant	900 x 900 (550R)	ULM
	Quadrant	1000 x 1000 (550R)	ULN
■	Offset Quadrant	1200 x 760 L/H (550R)	UL3
	Offset Quadrant	1200 x 760 R/H (550R)	UL4
	Offset Quadrant	1200 x 800 L/H (550R)	ULP
	Offset Quadrant	1200 x 800 R/H (550R)	ULQ
	Offset Quadrant	1200 x 900 L/H (550R)	ULR
	Offset Quadrant	1200 x 900 R/H (550R)	ULS
■	Specials	1100 x 900 D Shape (550R)	ULT
	Specials	1000 Circular Bow Front (550R)	ULW
	Specials	1200 x 900 Compartment L/H	ULI
	Specials	1200 x 900 Compartment R/H	ULO
	Specials	1200 x 900 P Shape L/H	ULU
	Specials	1200 x 900 P Shape R/H	ULV

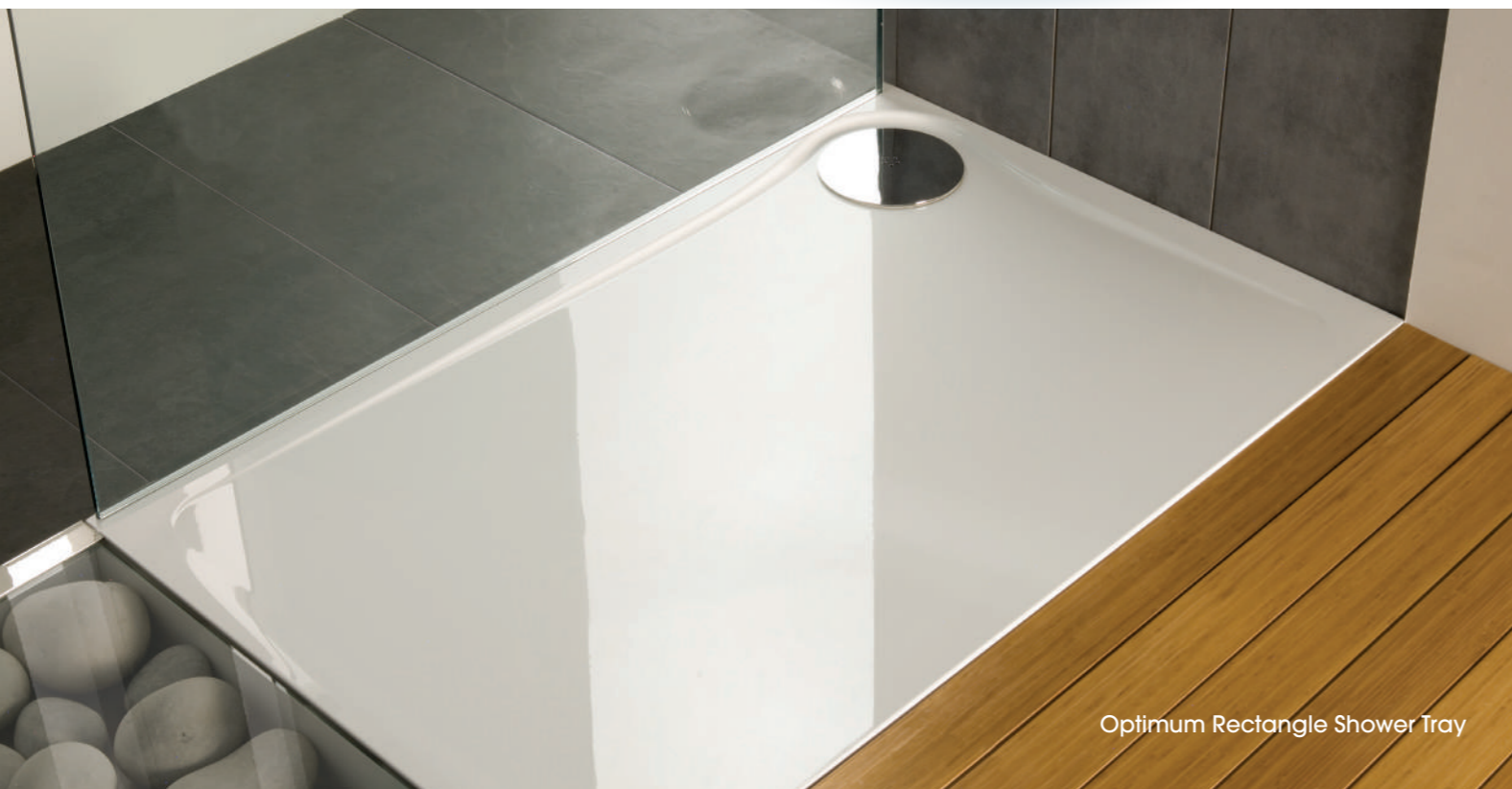
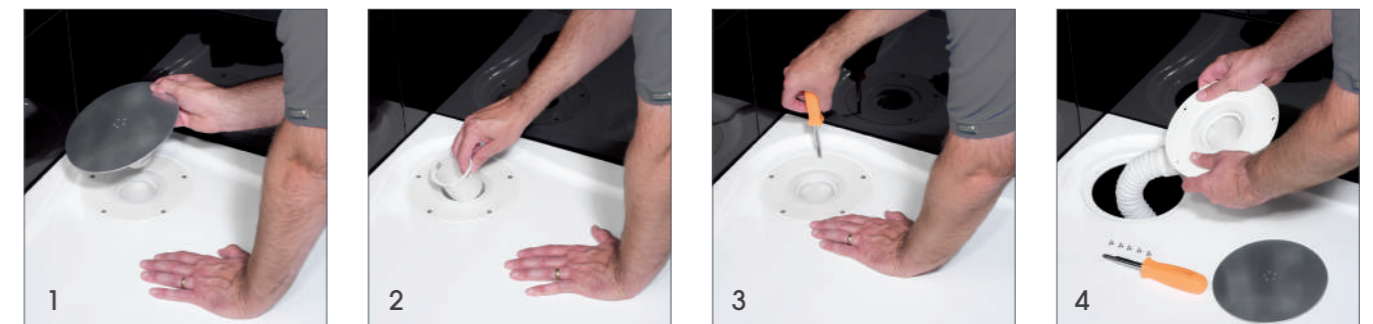
Easy Plumb Kit with Wood

For a raised installation use the MX easy plumb kit with wood. This creates a full support across the base of the tray to allow a strong solid foundation.



Top Access Waste System Stylish & practical

- Unique top access waste enabling quick and easy access for installation, service and maintenance.
- The design of the shower tray combined with the Hi-Flow Waste allows more than 32ltrs per minute drainage.



Classic Shower Trays

Solid and Dependable

Classic Shower Trays

Our traditional trays give solid and dependable installation.

These shower trays are the traditional high wall trays. With their durable and practical features the Classic range of shower trays gives a firm foundation to your showering area.

Available in an extensive range of shapes and sizes in either acrylic capped ABS or polyester gel coat finish, these stone resin shower trays can be installed flat on the floor or as a raised installation.

Features

- Traditional high wall shower tray
- Cast stone resin construction
- Available in a variety of shapes and sizes
- RAL matched colours available in gel coat shower trays
- Available in either acrylic capped ABS or polyester gel coat

High Wall

80
MM

90
MM

100
MM

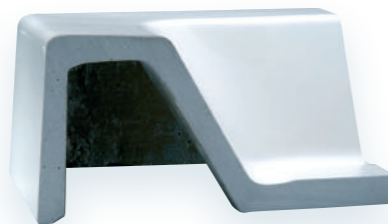
GEL
COAT

ABS
ACRYLIC
CAPPED

RAL
COLOURS
GEL COAT ONLY

FLAT TOP

UPSTAND



Cross section of tray shows the substantial stone resin fill. These shower trays are built to last!



*Applies to acrylic capped ABS trays only

Offset Quadrant - Right hand Flat top version



Rectangle - Upstand version



Quadrant - Flat top version



Classic Shower Tray shown with a Bifold Door and Atmos Sigma TMV and Kit

Classic Shower Trays

Classic Shower Trays

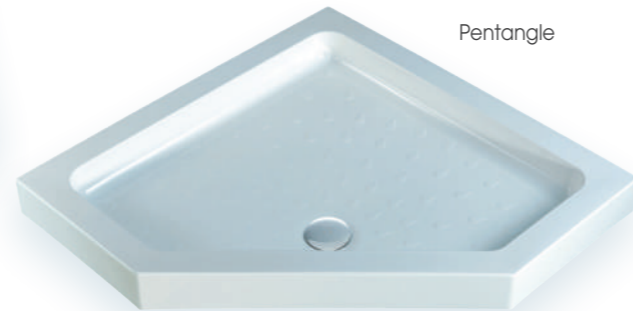
Available in an extensive range of shapes and sizes in either acrylic capped ABS or polyester gel coat finish, these stone resin shower trays can be installed flat on the floor or as a raised installation.



Rectangle - Flat top version



Quadrant - Upstand version



Pentangle



Classic Shower Tray shown with a Offset Quad with Atmos Inline Shadow Overhead TMV

Classic Shower Trays Range

Shape	Size mm	GEL	ABS	GEL	ABS
		Flat Top		Upstand	
Square	700 x 700	SAA			
Square	760 x 760		SAM		SAQ
Square	800 x 800		SBI		SBM
Square	900 x 900		SCC		SCG
Square	1000 x 1000	SCS			
Square	1200 x 1200	SCY			
Rectangle	900 x 700	SNA			
Rectangle	900 x 760	SNC		SNE	
Rectangle	900 x 800	SNQ		SNS	
Rectangle	1000 x 700	SOC			
Rectangle	1000 x 760	SOG			XMK
Rectangle	1000 x 800	SOQ		SOS	
Rectangle	1000 x 900	SPC			
Rectangle	1100 x 760	SPG			
Rectangle	1100 x 800	SPK		SPM	
Rectangle	1100 x 900	SPW		SPY	
Rectangle	1200 x 700	SQE			
Rectangle	1200 x 760		SQM		SQQ
Rectangle	1200 x 800		SRE		XML
Rectangle	1200 x 900		SRU		
Rectangle	1400 x 700	SSC			
Rectangle	1400 x 800	SSG			
Rectangle	1400 x 900	SSK			
Rectangle	1400 x 1000	SSS			
Rectangle	1500 x 800	SSU			
Rectangle	1500 x 900	SSW			
Rectangle	1600 x 800	SSY			
Quadrant	800 x 800 (500R)		TAA		TAC
Quadrant	800 x 800 (550R)		TAI		TAM
Quadrant	900 x 900 (550R)		TBC		TBG
Quadrant	1000 x 1000 (550R)	TBS			
Offset Quadrant	900 x 750 L/H (458R)	TNA			
Offset Quadrant	900 x 750 R/H (458R)	TNC			
Offset Quadrant	900 x 760 L/H (550R)	TNE			
Offset Quadrant	900 x 760 R/H (550R)	TNG			
Offset Quadrant	900 x 800 L/H (550R)	TNM			
Offset Quadrant	900 x 800 R/H (550R)	TNO			
Offset Quadrant	1000 x 760 L/H (550R)	XKD			
Offset Quadrant	1000 x 760 R/H (550R)	XKF			
Offset Quadrant	1000 x 800 L/H (500R)	TOC			
Offset Quadrant	1000 x 800 R/H (500R)	TOE			
Offset Quadrant	1000 x 800 L/H (550R)	TOG			
Offset Quadrant	1000 x 800 R/H (550R)	TOI			
Offset Quadrant	1000 x 900 L/H (550R)	TQO			
Offset Quadrant	1000 x 900 R/H (550R)	TQQ			
Offset Quadrant	1200 x 800 L/H (500R)	TOW			
Offset Quadrant	1200 x 800 R/H (500R)	TOY			
Offset Quadrant	1200 x 800 L/H (550R)	TPA			
Offset Quadrant	1200 x 800 R/H (550R)	TPC			
Offset Quadrant	1200 x 900 L/H (550R)	TPQ			
Offset Quadrant	1200 x 900 R/H (550R)	TPS			
Pentangle	900 x 900		UAE		UAG
Pentangle	950 x 950	UAO			
Pentangle	1000 x 1000	UAS			
Offset Pentangle	1200 x 900 L/H	UNA			
Offset Pentangle	1200 x 900 R/H	UNC			
Offset Pentangle	1400 x 900 L/H	UNG			
Offset Pentangle	1400 x 900 R/H	UNE			
Specials	1400 x 900 Walk-In with Drying Area			XCK	
Specials	1700 x 750 with Drying Area	STA			

Easy Plumb Systems

The MX EASY PLUMB SYSTEMS are specifically designed to convert any shower tray to a raised installation quickly and easily, saving you both time and money.

Panel Riser Kit Option 1



Easy Plumb Kit Option 2 (without wood)



Easy Plumb Kit Option 3 (with wood)



There are three options of Easy Plumb Systems available in two types. Type 1 is for square and rectangle and type 2 is for quadrant and offset quadrant. Each one is tailored to assist with your installation requirements and to allow easy service and maintenance.

Option 1

The Panel kit contains all the components you need to ensure a quick and simple installation every time.

This panel riser kit allows you to install any shower tray (Excluding Optimum, Earth & Classic trays) as a raised installation.

Option 2

This universal easy plumb kit gives you the option of having a 50mm or 90mm waste, extendible flexi pipe and a 2.8m flexi seal strip. Everything you need making it the ideal choice when installing as a raised shower tray. (Excluding Optimum, Duco, Classic and Earth trays).

Option 3*

This kit contains all the essential components required for the ultimate raised installation, not to mention all the additional products you require such as waste, flexi seal strip etc. it also comes complete with a specially formulated compound adhesive and wooden baseboards to achieve the overall stress support required on larger trays and stone resin option.

* MX recommends this to be used on Classic gel coat and Optimum shower trays and DucoStone over 1000mm and on all cut and shaped Duco trays.

N.B. Also available are extension kits suitable for all kits.

Universal Easy Plumb Kit (without wood) Type 1

Any Tray...

The Universal Easy Plumb Kit...

Complete raised installation...



SHOWER TRAY ACCESSORIES

All are specifically designed to speed up installation and give maximum performance.

Standard Hi-Flow Waste



Standard Hi-Flow Waste enables water to flow from the shower tray at a rate of 28 litres per minute

- Manufactured to BSEN1329/1:2000 and BSEN1451/1:2000
- Vented dome to allow higher flow
- Top access to clean and maintain
- Quick release inner unit for ease of cleaning
- This waste has a Grill or dome option

Retail Code: **WAB**

90mm Hi-Flow Waste Complete with Offset Elbow



A 90mm Hi-Flow Waste enables water to flow from the shower tray at a rate of 32 litres per minute

- Manufactured to BSEN1329/1:2000 and BSEN1451/1:2000
- Vented dome to allow higher flow
- Large easy to clean and maintain
- Pull out basket trap
- Complete with offset elbow

Retail Code: **WAA**

Compound Adhesive - 310ml



- Specially formulated for shower trays
- Resistant to Chemicals & Acids
- Quick drying
- Creates a strong permanent bond
- Waterproof

Retail Code: **WAN**

Flexi Seal Strip - 2.8 Metre / 3.8 Metre



The professional solution for a watertight shower tray and bath

- Transforms any Flat Top shower tray to a filing upstand option
- Creates a watertight seal between the shower tray and the wall

Bulk Code: **WAY-2.8M**
Bulk Code: **WA3-3.8M**

Retail Code: **WA2-3.8M**

Extendible Flexi Waste Pipe



- Extends up to approx 1000mm
- Reduces plumbing installation time
- Tested to 1 bar pressure

Retail Code: **RMC**

One Piece Panel Easy Plumb Kit (without wood) Type 2

Any Tray...

The Universal Easy Plumb Kit...

Complete raised installation...

